

# Urban Farming for One Health: Growing People, Food and Community

Cassandra Lopez

Old Dominion University- Joint school of Public Health; University of Pittsburgh- Pitt Public Health Undergraduate Scholars Program

## Thriving Cities Start Where Health, Nature and Nourishment Meet

### Motivation

- The Oasis Farm is an urban farm in the heart of Homewood that is open to the public<sup>4</sup>
- It serves the community by producing food and creating a safe space to gather and learn<sup>4</sup>
- This use of urban farming helps increase food access in a community that is considered a food desert<sup>2</sup>

### One Health

- Collaborative efforts working to attain optimal health for people, animals and the environment<sup>1</sup>
- Recognizes that all health of people is connected to all health of animals and the whole environment<sup>1</sup>

### Urban Farming

- The cultivation, processing and distribution of agricultural products (food or non food) in urban or suburban areas<sup>2</sup>
- Can provide environmental, economic and social benefits to the surrounding communities<sup>2</sup>

### Connections

- Interconnection of animals, humans and the environment<sup>1</sup>
- Sustainability<sup>2</sup>
- Holistic Wellness<sup>2</sup>
- Community Engagement<sup>2</sup>



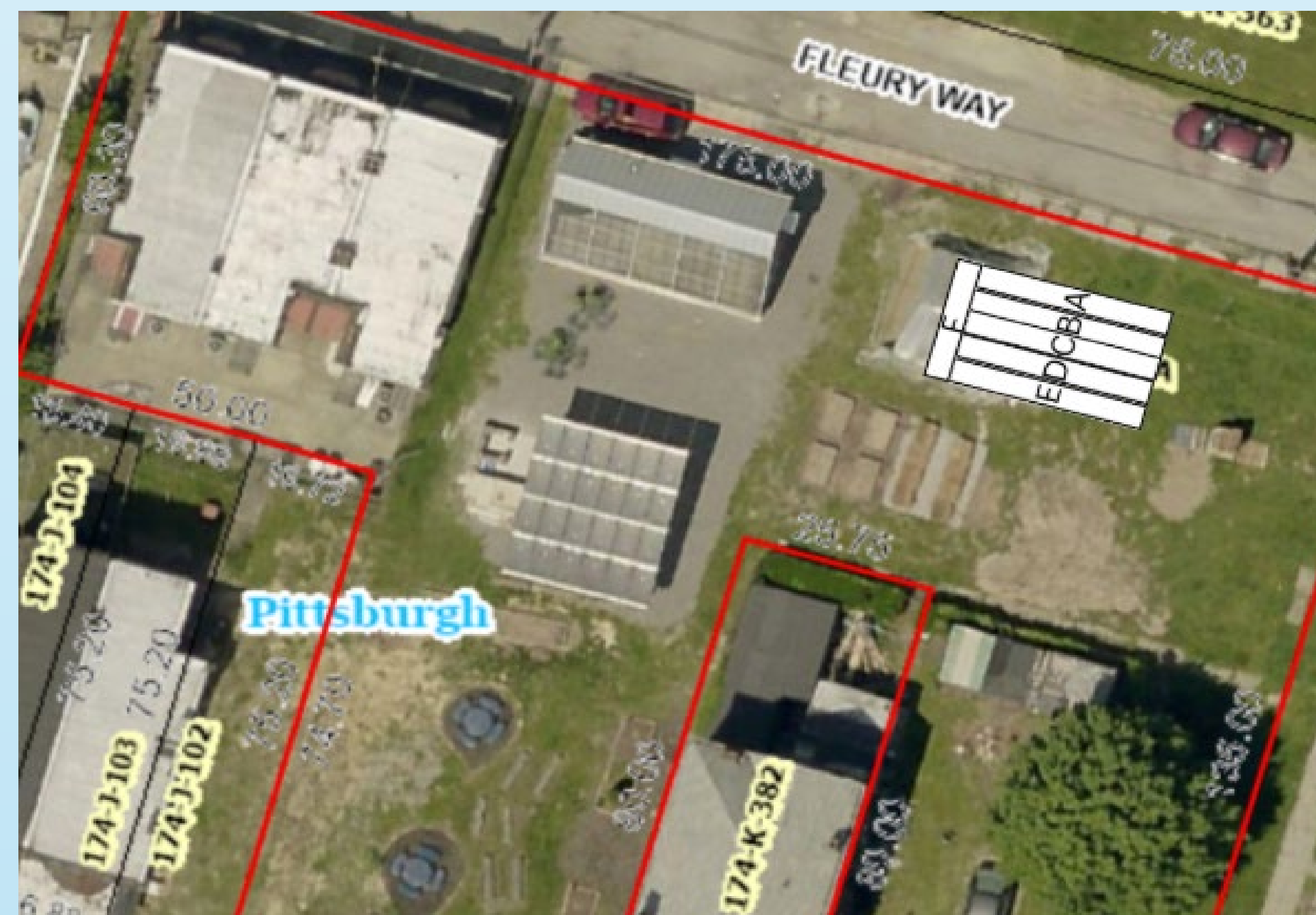
the Oasis Project

### Methods


- Working with The Oasis Farm program Field2Fork<sup>4</sup> 
- Planting, harvesting, farm education<sup>4</sup>

### Context

- The Oasis Farm's soil must be tested for lead as the previous building were buried instead of removed<sup>3</sup>
- Although levels are safe, there are risks to having any level of lead in the soil<sup>3</sup>



Location	PPM Pb
A	61
B	38
C	56
D	48
E	79
F	264

**HIGH RISK: 1,000+ PPM**  
Do not garden with contaminated soil in this range 

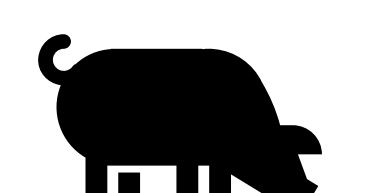
**MEDIUM RISK: 401-1,000 PPM**  
Soil work becomes more difficult, crops should be moved to raised beds with clean soil

**LOW RISK: 151-440 PPM**  
Important to hands are washed and avoid bringing dust indoor after interacting with soil

**VERY LOW RISK: 0-150 PPM**  
Lowest range of risk, however a "clean hands policy" should always be used



### References




OASIS FARM