

Student opinions on GRE use in admissions

Student Representatives of EPCC

1/30/2020

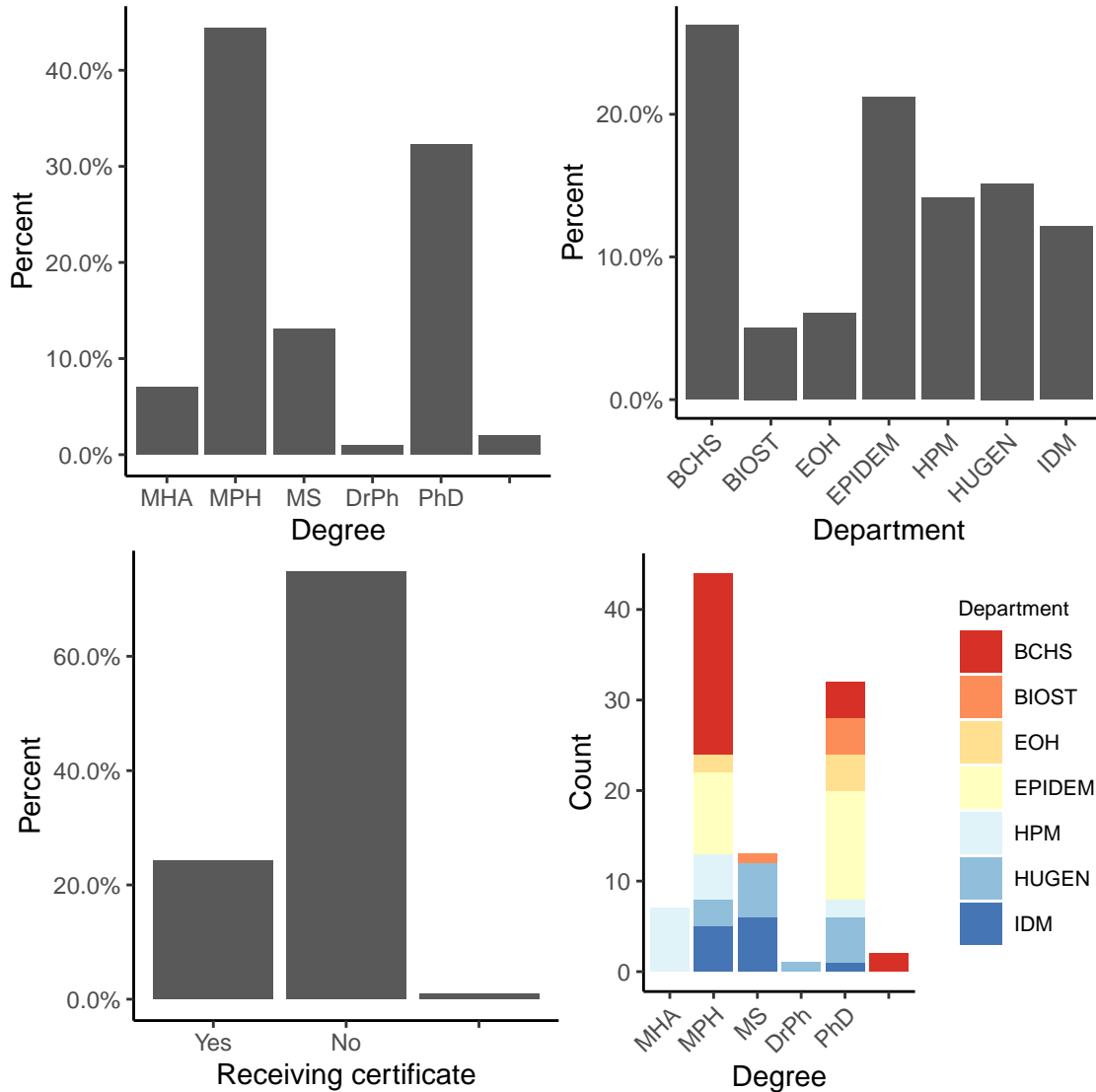
Contents

Participants	2
Who completed the survey	2
Accuracy of Scores	3
How accurately do you feel the GRE represents your intelligence/ability to successfully complete your current program?	3
Should the GRE be used in Admissions?	4
Do you think that the GRE should be used in admissions decisions?	4
Barriers to GRE	5
How many times did you take the GRE?	5
Barriers students felt applied to them.	5

Participants

Who completed the survey

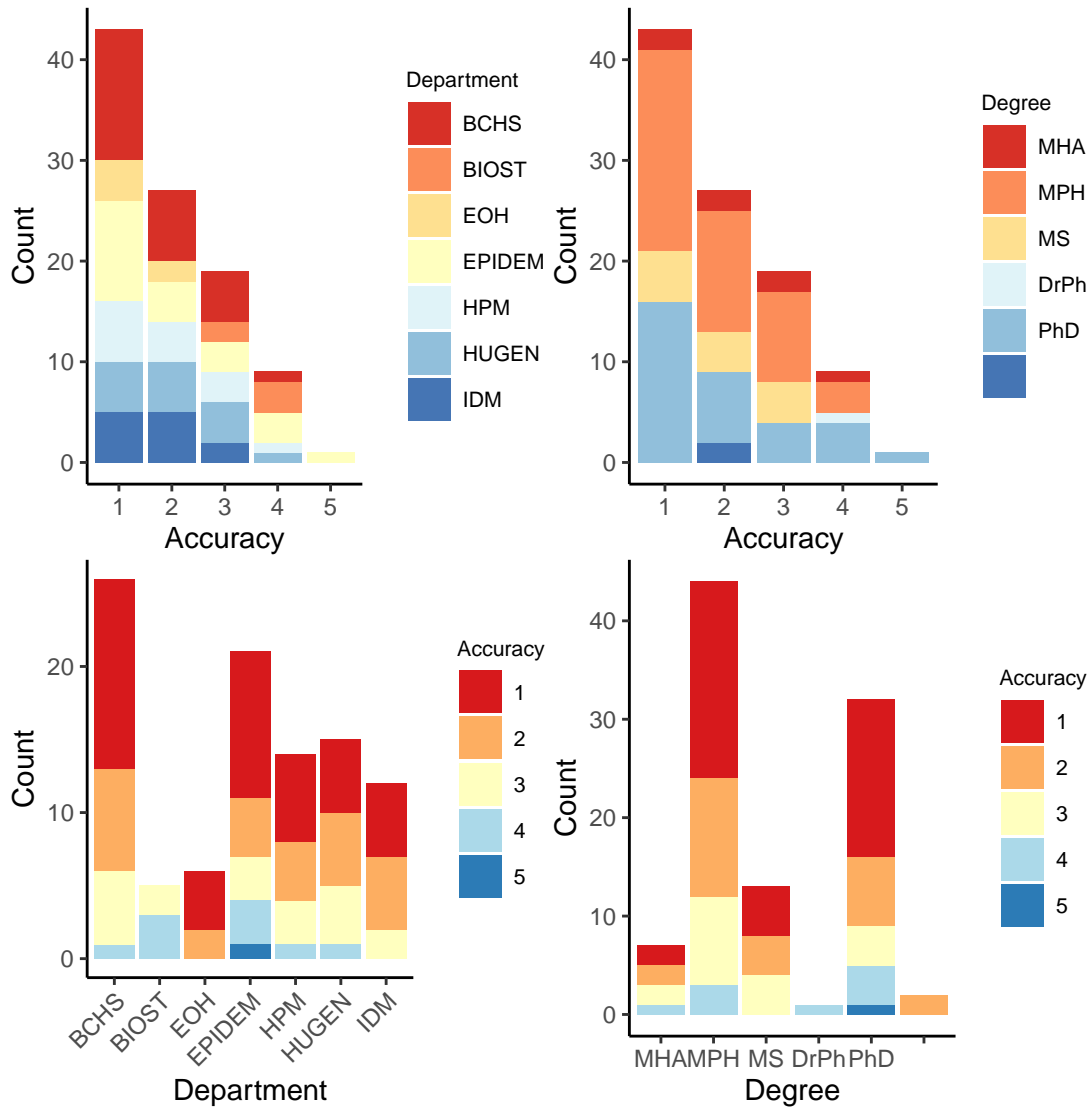
A total of 99 students completed the survey. The distribution of degree, department, and certificate status can be seen below. The majority of students who responded were in the MPH program (n=44), with the second most being in the PhD program (n=32). The largest department represented was the BCHS department (n=26), followed by the EPIDEM department (n=21).



Accuracy of Scores

How accurately do you feel the GRE represents your intelligence/ability to successfully complete your current program?

On a scale of 1 (Not at all) to 5 (Perfectly), the score of 1 had the largest number of responses for how accurately students felt the GRE represented their intelligence, (n=43, 43.4%). However, there is variability within departments and degree plans. For example, students in the BIOST department only reported scores of 3 and 4.

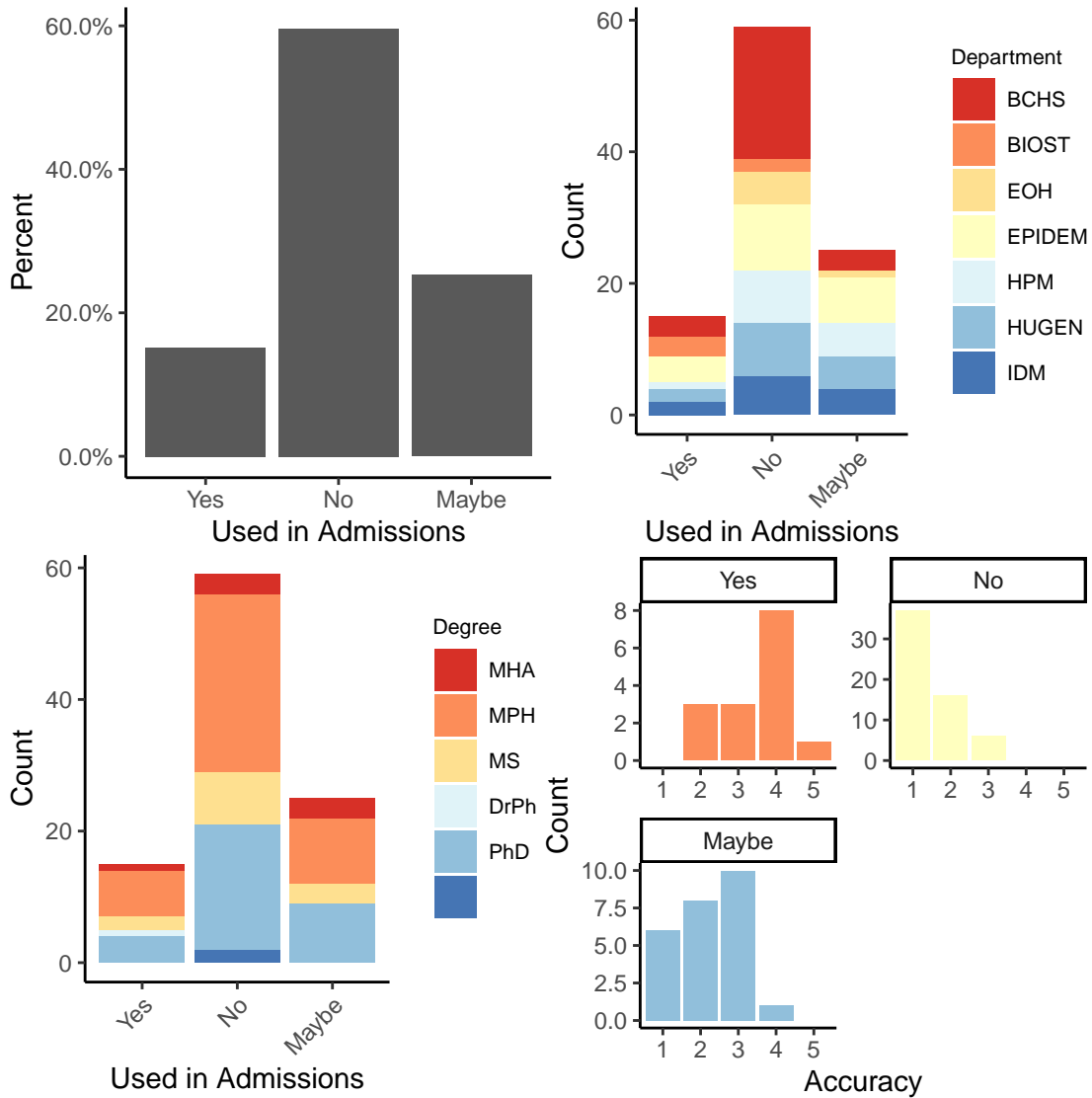


Should the GRE be used in Admissions?

Do you think that the GRE should be used in admissions decisions?

The majority of students felt the GRE should not be used in admissions decisions (n=59, 59.6%). 25 students reported “Maybe” and 15 students reported “Yes”.

The distribution of perceived accuracy differs based on if students reported if the GRE should be used for admissions decisions. That is, students who felt that the GRE more accurately represented them believed it should be used in admissions

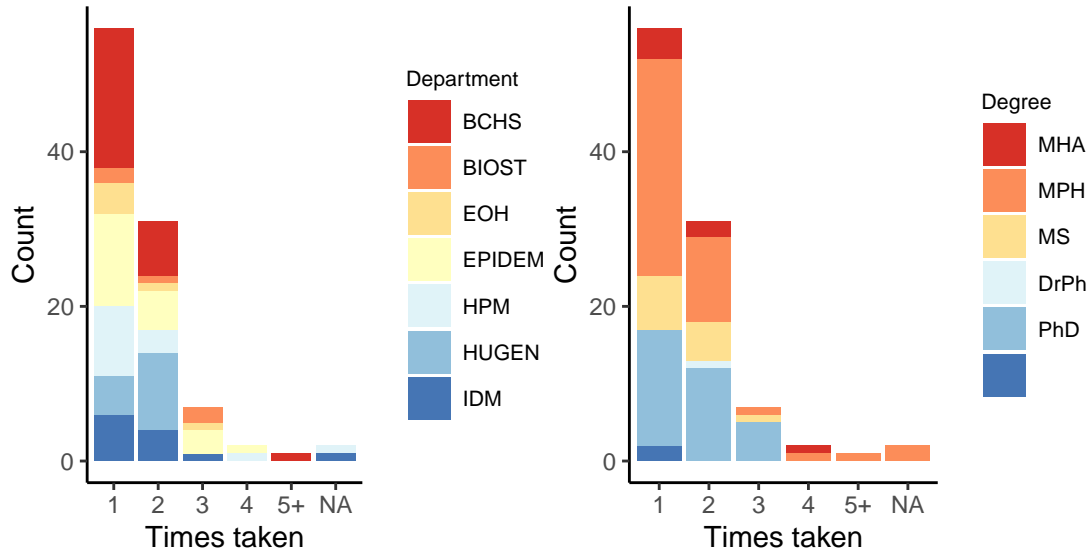


	Yes (n=15)	No (n=59)	Maybe (n=25)	Overall (n=99)
as.numeric(accuracy)				
Mean (SD)	3.47 (0.915)	1.47 (0.679)	2.24 (0.879)	1.97 (1.04)
Median [Min, Max]	4.00 [2.00, 5.00]	1.00 [1.00, 3.00]	2.00 [1.00, 4.00]	2.00 [1.00, 5.00]

Figure 1: Mean perceived accuracy by belief in use of GRE in admissions. (Kruskal-Wallis $p < 0.001$)

Barriers to GRE

How many times did you take the GRE?



Barriers students felt applied to them.

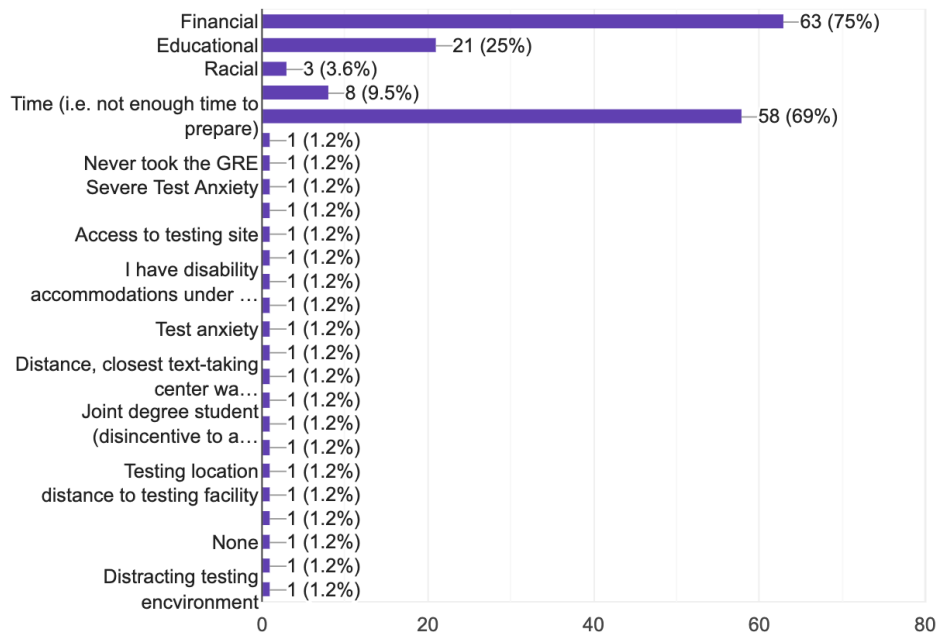


Figure 2: Barriers that applied to students in preparing for or taking the GRE.