

# Departments and Degrees

# Behavioral and Community Health Sciences

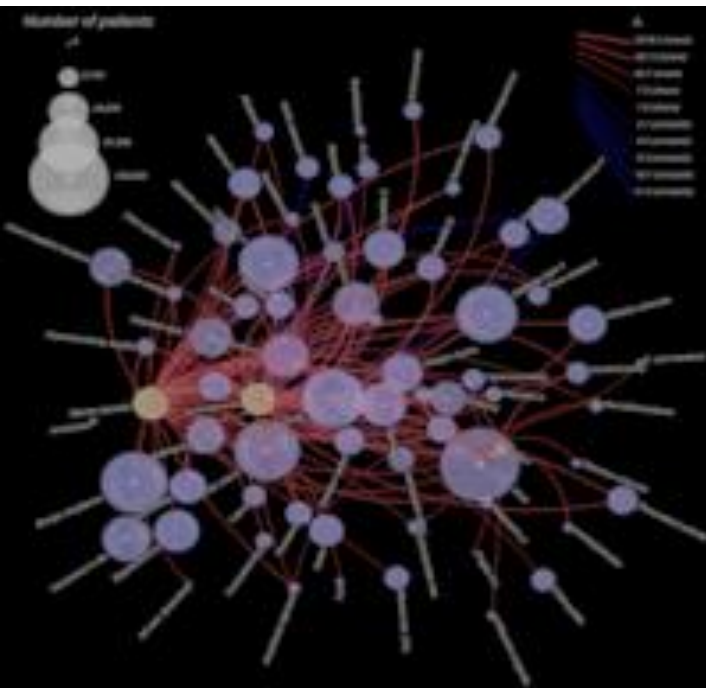
**MPH, DrPH, PhD**

- How do social, cultural, political, and behavioral factors affect health?
- How can we work with communities to design effective public health interventions based on those factors?



# Biostatistics

MPH, MS, PhD



- What do public health and medical data tell us about how to improve health?
- What new statistical methods do we need to perform those analyses?



# Environmental and Occupational Health

MPH, DrPH, MS, PhD

- What are the health effects of environmental and occupational exposures to biological, chemical, and physical agents?
- How can we measure these exposures and design public health interventions?



# Epidemiology

MPH, DrPH, MS, PhD

- What are the patterns of disease and of risk factors in populations?
- Infectious disease, aging, cancer, chronic disease (cardiovascular/diabetes), mental health, reproductive health, etc.



# Health Policy & Management

## MPH, MHA, MS, PhD

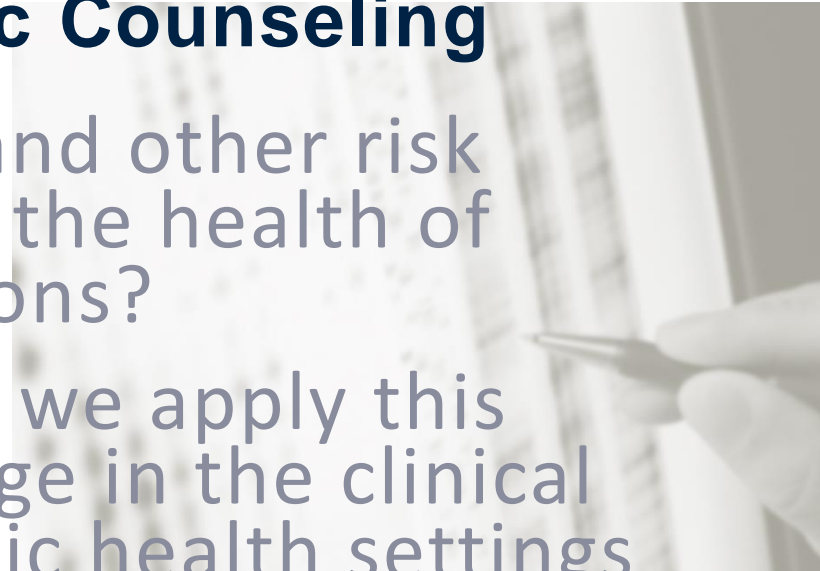
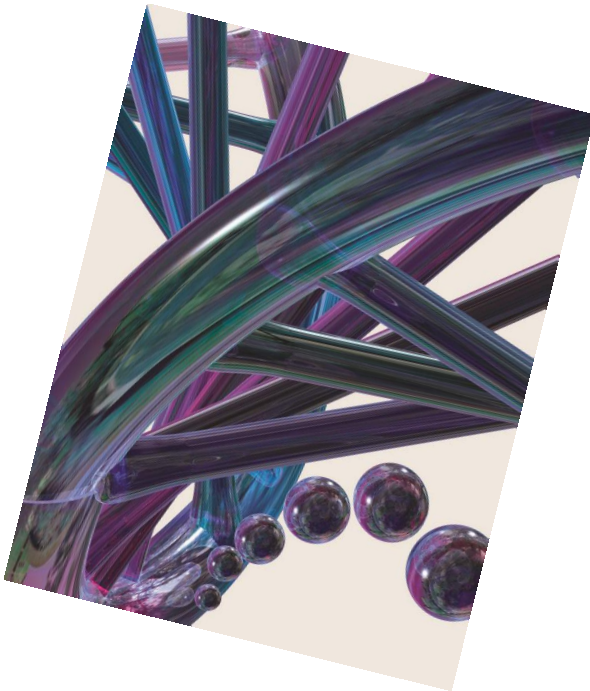
- How do policy decisions and the policy process affect health?
- Management skills for leadership in health care and public health organizations.



# Human Genetics

## MPH, MS, PhD, MS Genetic Counseling

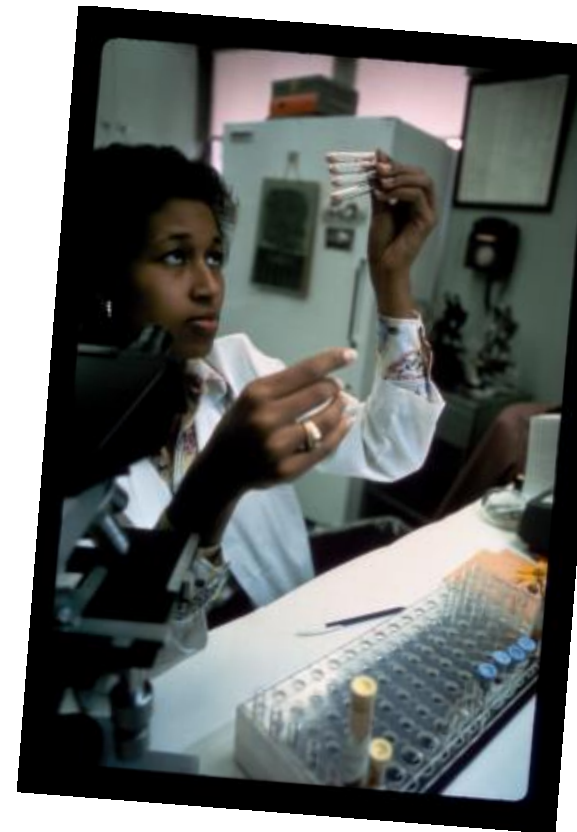
- How do genetic factors and other risk factors interact to affect the health of individuals and populations?
  - How can we apply this knowledge in the clinical and public health settings to improve health?



# Infectious Diseases and Microbiology

**MPH (2 flavors), MS, PhD**

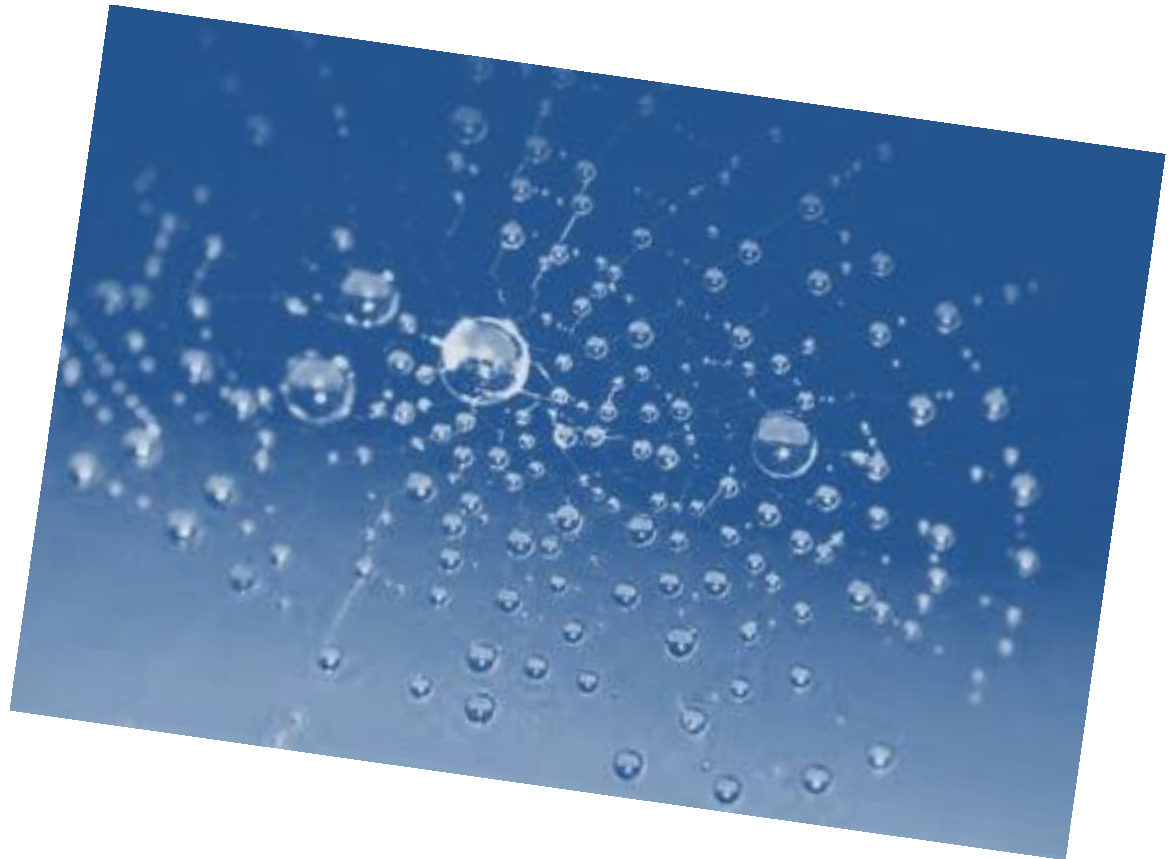
- How do mechanisms of pathogenesis work at the cellular and molecular levels?
- How can we apply that knowledge for disease prevention and treatment?





# Multidisciplinary MPH

Individualized MPH program developed to meet the unique needs of doctoral-level health professionals



# Peace Corps Master's International

Combine an MPH with Peace Corps service

- Epidemiology
- Behavioral and Community Health Sciences
- Infectious Diseases and Microbiology



# Joint Degree Options

- MPH/MPA
- Master of Public Administration
- MPH/MPIA
- Master of Public and International Affairs
- MPH/MID
- Master of International Development
- MPH/JD
- Juris Doctor



# Joint Degree Options

- MPH/MSW
- Master of Social Work
- MPH/PhD
- Doctorate in Social Work
- MPH/PhD
- Doctorate in Anthropology
- PhD/MD
- Epidemiology or Genetics



# Certificate Options

- Global Health
- Lesbian, Gay, Bisexual and Transgendered Individuals and Wellness
- Health Equity
- Public Health Genetics
- Public Health Programs and Systems Engineering
- Community-Based Participatory Research
- Health Systems Leadership and Management
- Environmental Health Risk Assessment

